



Portwood

Find Your Place to Thrive. *At Portwood.*



Portwood is a 23 acre green-focused community positioned squarely in the pulse of vibrant Port Moody. Our commitment to sustainability means that residents can explore a vast landscape of untouched earth far beyond their backyard, while enjoying every comfort that connected living has to offer.

Designed by award-winning Acton Ostry Architects, our unique collection of homes take their cues from the surrounding natural beauty, and mark the beginning of a more conscious, contemporary kind of neighbourhood with new retail options at your doorstep.



CHAPTER 1	NEIGHBOURHOOD
CHAPTER 2	VISION
CHAPTER 3	COMMUNITY
CHAPTER 4	AMENITIES
CHAPTER 5	GREEN SPACE
CHAPTER 6	FUTURE-FOCUSED

A Neighbourhood. Connected.



Every urban adventure and natural escape imaginable is within reach. From buzzing breweries to breathtaking hikes, residents at Portwood won't have to travel far to find places and services to elevate, embrace, and enjoy their everyday.

 **Downtown Port Moody**
5 Minute Drive from Portwood

● PARKS

1. Barnet Marine Park
2. Burnaby Mountain Park
3. Easthill Park
4. Old Orchard Park
5. Rocky Point Park
6. Westhill Off-Leash Dog Park
7. Westhill Park

○ EDUCATION

1. Coquitlam College
2. Douglas College Coquitlam Campus
3. École Moody Middle School of the Arts
4. Moody Elementary
5. Port Moody Secondary School
6. Seaview Community School
7. Simon Fraser University

● FOOD & DRINK

1. BjornBar Bakery
2. Black Sugar Coffee House
3. Cascadia Bakehouse
4. Gabi & Jules Handmade Pies and Baked Goodness
5. Mariner Brewing Company
6. Moody Ales & Co.
7. Original's Café Mexicano
8. Sushi Mori
9. Taps & Tacos
10. The Hard Bean Brunch Co.
11. The Keg Steakhouse & Bar
12. The Parkside Brewery
13. Yellow Dog Brewing Co.
14. Saku (Coming Soon)

● DAILY NEEDS



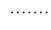

1. Coquitlam Centre
2. Rocky Point Centre
3. Safeway Burquitlam
4. Suter Brook Village
5. Walmart Supercentre
6. Westwood Mall
7. F45 Training Port Moody
8. Scotiabank
9. Oxygen Yoga and Fitness Port Moody
10. The City of Lougheed Shopping Centre
11. Future YMCA

● CHILDCARE

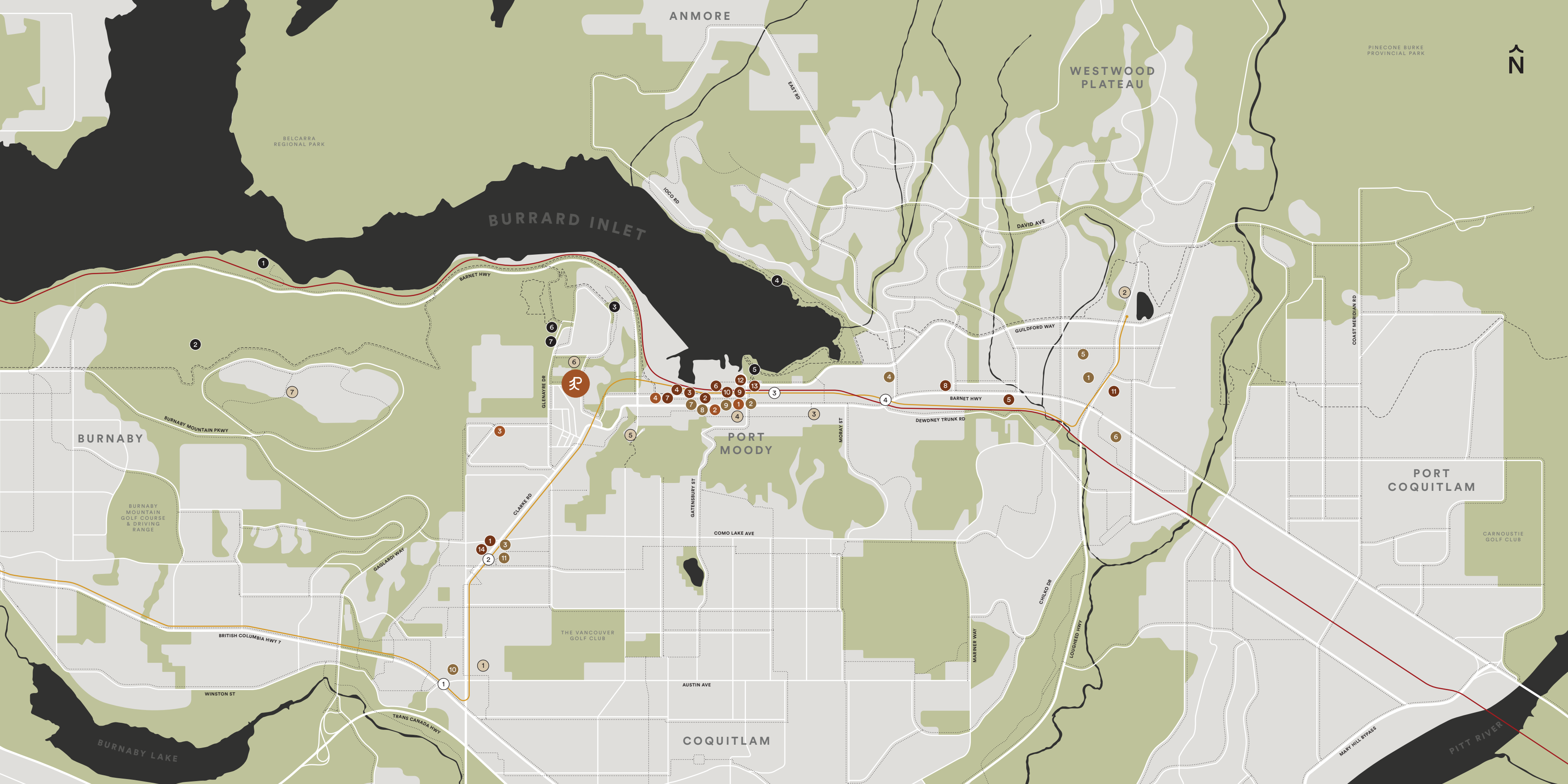
1. BrightPath St Johns
2. Busy Crocodile Children's Centre
3. Glenayre Montessori Centre
4. Kiddos Clubhouse Daycare

○ TRANSIT

1. Lougheed Town Centre
2. Burquitlam Station
3. Moody Centre
4. Inlet Station

-  MILLENNIUM LINE
-  WEST COAST EXPRESS
-  BICYCLE ROUTES
-  TRAILS





ANMORE

WESTWOOD PLATEAU

PINECONE BURKE PROVINCIAL PARK



BELCARRA REGIONAL PARK

BURRARD INLET

BURNABY

PORT MOODY

PORT COQUITLAM

COQUITLAM

BURNABY MOUNTAIN PKWY

BARNET HWY

DAVID AVE

GUILDFORD WAY

BURNABY MOUNTAIN GOLF COURSE & DRIVING RANGE



COMO LAKE AVE

CARNOUSTIE GOLF CLUB

BRITISH COLUMBIA HWY 7

CLARKE RD

GATENSURRY ST

MOBAY ST

DEWDNEY TRUNK RD

BARNET HWY

BAGLARDI WAY

AUSTIN AVE

CHILKO DR

LOUGHEED HWY

WINSTON ST

TRANS CANADA HWY

MARY HILL BYPASS

BURNABY LAKE

PITT RIVER



- A New 23 Acre Community in Port Moody
- The Lower Mainland's Most Connected City
- Residences, Townhomes, Retail & Rental



CHAPTER 2: VISION

Connect & Grow. *Organically.*



Welcome to a conscious approach to living where modern architecture thrives in balance with the natural habitat that surrounds it. Our homes are positioned in the centre of a vastly untouched 23 acre green district and optimally connected to Downtown Port Moody and fast transport routes. Complemented by an abundance of unique amenities, parks, trails, and daycare — Portwood is your place to thrive.



Home & Nature. *Nurtured.*



- Forging a New Community, Together
- Modern Architecture Blends with Nature
- Homes for Families Large & Small



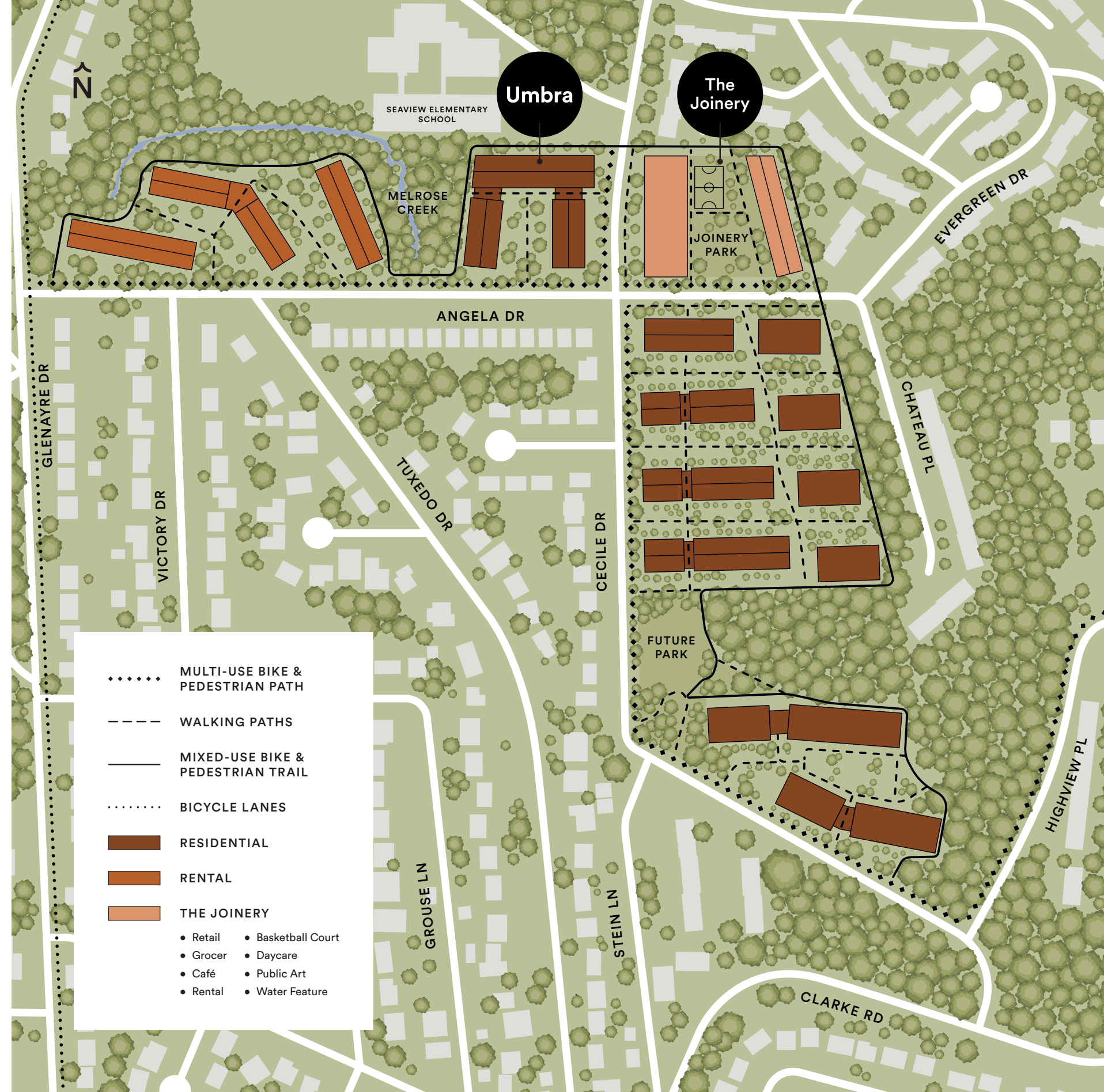
With 5 neighbourhoods each inspired by their distinct landscape, our design puts organic living, sustainability and community at the forefront. Minimal environmental impact was the focal point from which our big idea of placemaking grew, with over 70% of the natural land left intact.





Everything You Need is Right Here.

Portwood is alive with opportunities for play through its network of interconnected walking and bike paths punctuated by newly formed parks and green spaces. It all comes together at The Joinery, the energetic epicentre of this multiphase community.





- Café, Grocer & Shops
- Modern Daycare Facility
- Playgrounds, Parks & Recreation



CHAPTER 4: AMENITIES

Health & Leisure. *Centre Stage.*



Wellness starts from within, but at Portwood, it's there to meet you when you step outside. Bike paths give residents an eco-friendly way to get their groceries at The Joinery, take their child to daycare, join in on an impromptu basketball game or just "enjoy the ride."



The Joinery





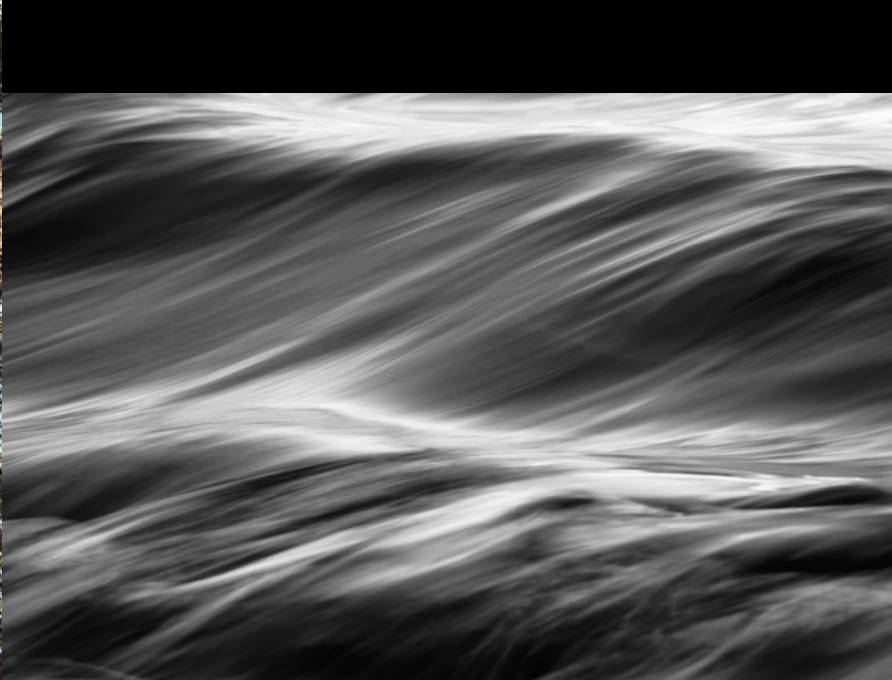
- 70% of Portwood is Dedicated Green Space
- Lush Landscaping, Plants & Gardens
- Nature at Every Doorstep



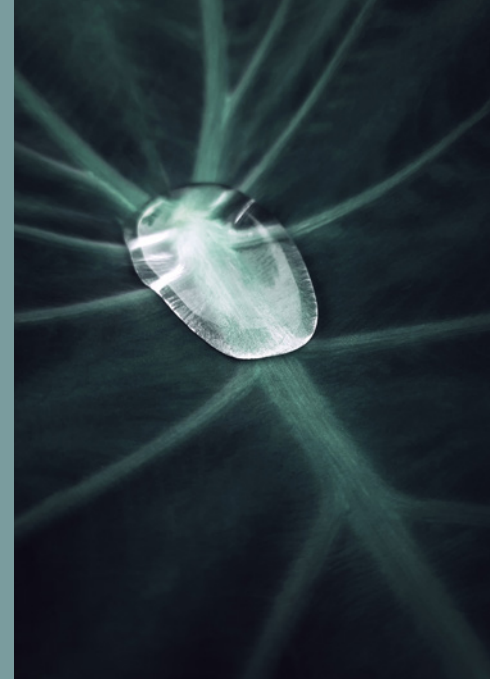
The 5 phases of our community are surrounded by 3 acres of parks and 5 acres of urban forest. Portwood will provide residents with an abundant landscape of untouched green space, grassy slopes, a soothing creek and intimate trails to privately explore.

CHAPTER 5: GREEN SPACE

23 Acres. *Disconnected.*



Built Better. *For Your Benefit.*



- EV Charging & Car Share
- Low Carbon Emission Homes
- Communal Electric Bicycles



Sustainability is deeply embedded in our ethos. This is why our community is built with climate change in mind. Portwood homes are designed with low carbon energy sustainability strategies that minimize global impacts for future generations.

Build to *Thrive*™

Established in 2009, EDGAR has been creating meaningful spaces through our expansive portfolio of real estate offerings for over a decade. The creative and entrepreneurial spirit of our collective fuels our vision of a more sustainable and supportive future for all. Our commitment to thoughtful placemaking allows us to continue to deliver innovative environments that inspire our diverse and growing community of homeowners. Attention to detail and appreciation for quality influences every decision we make when it comes to crafting our projects and rendering our plans into reality. Our respect for each neighbourhood informs the way in which our architecture interacts with its natural surroundings, complementing the beauty that exists effortlessly around our walls without disrupting its peace.

With every decision. On every floor. In every building. We don't just build...We build responsibly. We build passionately. We build to thrive. Thriving communities. Thriving results. Thriving lives.



Creating Something Better Together.

ARCHITECT

Acton Ostry Architects

Acton Ostry Architects designs eloquent, engaging and inspiring communities that create a sense of place. Their housing reflects the historical, social, and cultural context of its surroundings. AOA are dedicated to design that positively contributes to the values and aspirations of the communities they serve.

INTERIOR DESIGNER

Cristina Oberti

Cristina Oberti Interior Design is an award-winning Vancouver-based interior design firm with extensive experience and knowledge of multi-family residential and commercial design locally. The firm designs prestigious interiors and provides a superior level of finishing and furnishing. It creates a new message for each specific project advancing the notion of coherence and refinement of style, with a sophisticated European influence.

LANDSCAPE ARCHITECT

PWL Partnership

Since 1976, PWL Partnership has transformed built environments into vibrant communities, respectful of their natural, cultural, and historical attributes. We are a collaborative team of landscape architects, urban designers, and planners. Our designs aim to create equitable, resilient landscapes that support inclusivity and communal well-being.

CONSTRUCTION

Axiom Builders

Axiom Builders is committed to building exceptional communities to exceptional standards. As a forward-thinking construction partner, our dedicated team and skilled tradespeople operate everyday with the end user in mind. The result: building a quality product and delivering peace-of-mind.

SALES & MARKETING

rennie

rennie brings a thoughtful, trusted approach to real estate. With a focus on leveraging intelligence to improve communities, their 130+ head office staff and 240+ realtors work together to provide expert knowledge and exceptional service for developer, consumer, and advisory clients.

Past Projects

The Duke



Vancouver, BC
Completed

The MacLaren



Edmonton, AB
Completed

The Clifton



Edmonton, AB
In Development

The Hendrix



Edmonton, AB
Completed

Portwood.ca

A Green-Focused **23** Acre Community

E D
G A
R 

rennie

This is not an offering for sale. Any such offering can only be made with a disclosure statement. The developer reserves the right to make changes and modifications to the information contained herein without prior notice. Artist's renderings and maps are representations only and may not be accurate. Dimensions, sizes, areas, specifications, layout, and materials are approximate only and subject to change without notice. E.&O.E.